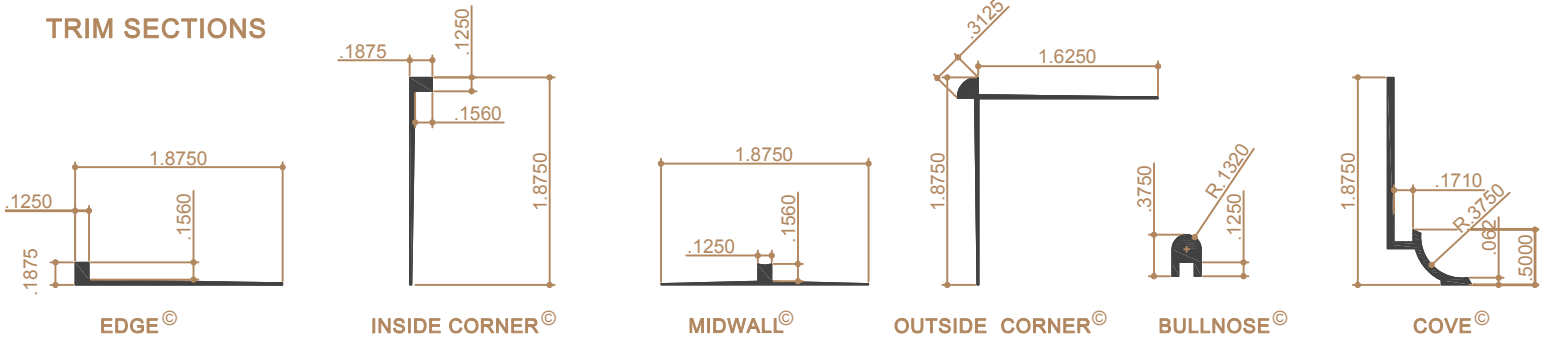




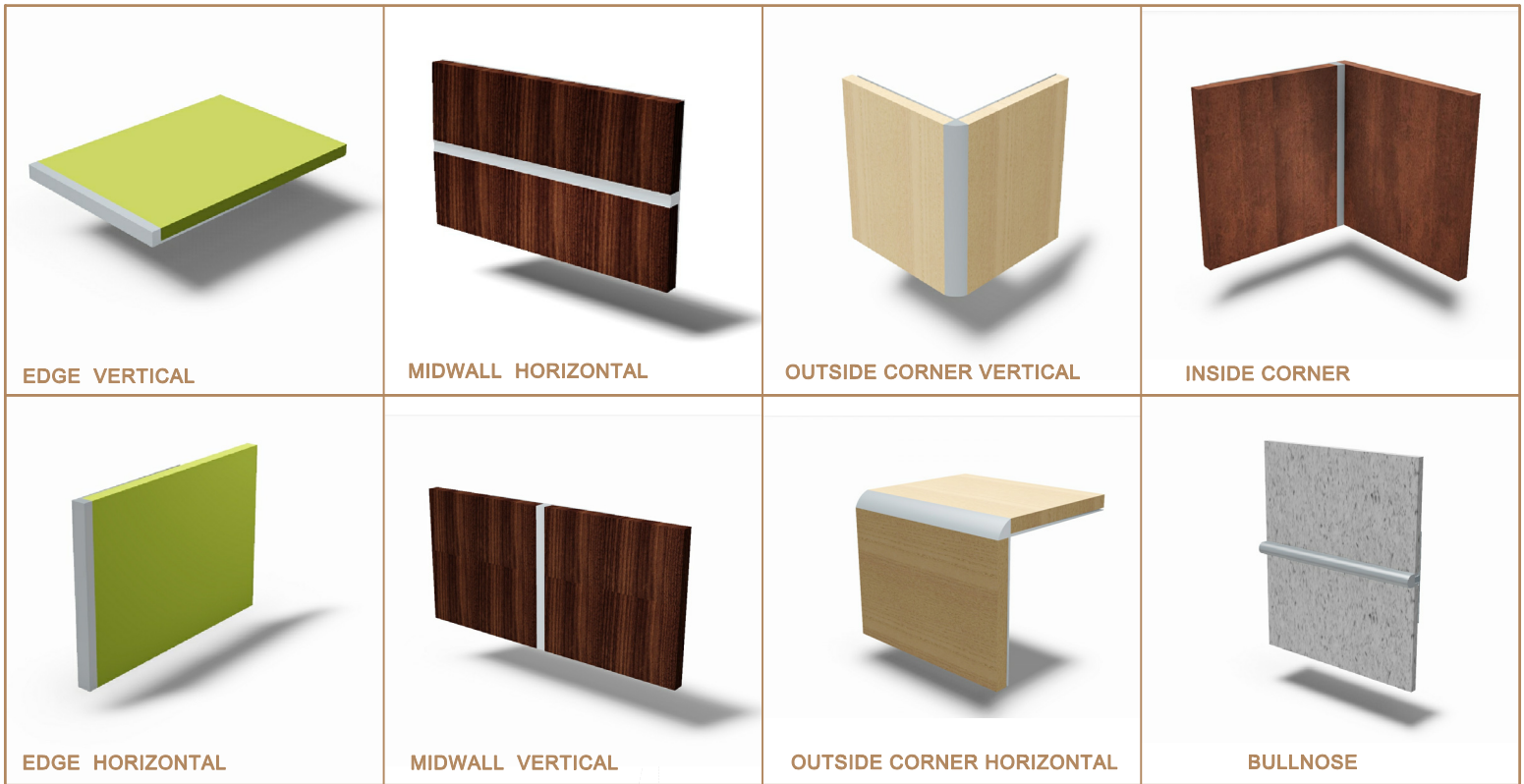
TRIMSET™

FINISH AND EDGE PROTECTION FOR 1/8" PANELS

TRIM SECTIONS



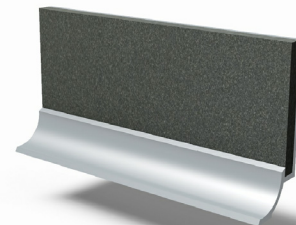
TRIM AND PANEL ASSEMBLY PERSPECTIVE



METAL TRIM SPECIFICATION

- PROFILE STANDARD LENGTH - 10'-0"
- EXTRUDED ALUMINUM, 6063 ALLOY, T5 TEMPER
- STANDARD FINISH - CLEAR SATIN ANODIZED
- CUSTOM FINISH OPTIONS: POWDER COAT PAINT, BLACK, BRONZE AND NICKEL SILVER ANODIZE

AVERVE 1/8" TRIM PROVIDES A PROTECTIVE METAL SHIELD AT PANEL EDGES AND CORNERS. ACCENTS PANEL JOINTS AND FACILITATES ACCURATE PANEL ALIGNMENT.



COVE